

SAFETY  
ENGINEERING  
FOR A SAFE  
WORK



**Safeway360**

**360.**

**Product  
Presentation**  
**Anti-slip  
protection**

# Safeway 360

We offer you the global advanced security service to **protect the people on your team work, the work areas and the material goods.**

We are committed to supporting you and to offer you the most professional and appropriate services, fast and reliable.



STUDY & PROJECT



PRODUCT & INSTALLATION



AFTER SALES & MAINTENANCE

---

We take care of solving **all the project stages**: from the detection of the needed solution, to the maintenance of the facilities.



GLOBAL SAFETY

# Outdoor & Indoor

People protections



Asset and property protections



Temporary and final signs



Delimitation of work areas



Customized design & solutions

SAFETY ENGINEERING  
FOR A SAFE WORK





## Vigil Deck Mark

The range of Vigil Anti Slip products are considered as the best available product in the market for long term anti-slip protection. It finds its applications in the demanding situations in:

- Offshore
- Mining
- Shipping and dredging
- Chemical Industries
- Fishing industry
- Food industry
- In all other demanding situations

The products are renowned for the resistance to chemicals and other solutions.







## Prevention of Slips, Trips & Falls

### Statistics - Falls from heights and Slips & Trips

A "fall from height" is a common cause of injury at workplaces. This is not only associated with personal suffering but also with high costs. In the industry, a fall from a roof, platform or (open) floor, a fall from a ladder or stairs and/or a fall from scaffolding is common.

**Annually, more than 200,000 workers in NL have an accident at work, which means, based on 29%, more than 58,000 people fall from a height during their work each year.**

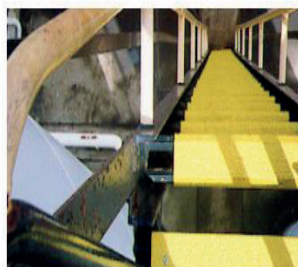
**Vigil Antislip will help to prevent slips and falls!**



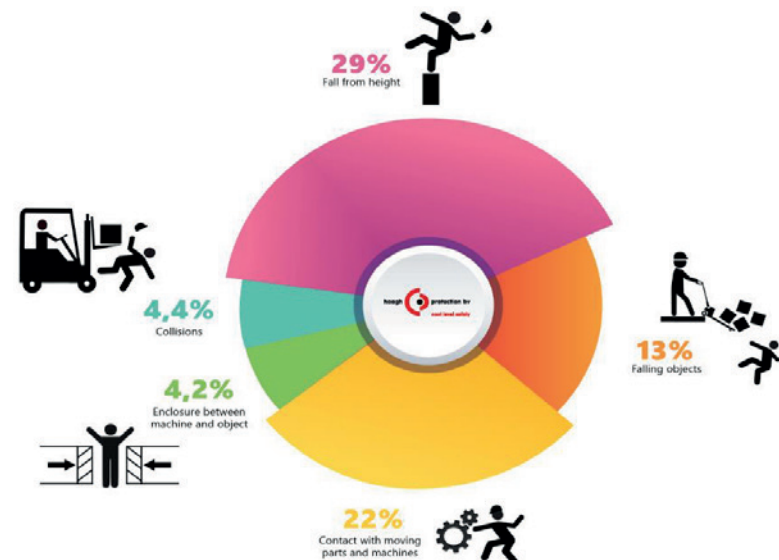
WALKWAY AND RAMP SAFETY



STAIRWAY SAFETY



LADDER SAFETY





## Prevention of Slips, Trips & Falls

Obstacles to improvement for safe working include:

- People believe the risks are NOT serious enough
- Little understanding of the many cause
- Thinking that slips/trips/falls are inevitable
- Poor risk assessment and management controls including lack of follow up and monitoring
- Associated cost factor of implementation and/or changes





## Key Assessment Criteria

### Uniformity of Design:

All surfaces being used and walked on - stairs, ladders, walkways, platforms should be of uniform non-slip material for confident, no-risk usage.

### Co-Efficient of Friction:

All surfaces to be rendered non-slip and used daily and regularly by employees. Should have a minimum DIN 51130- rating of R12 and an ASTM DAS18 of at least 0.49 when oiled.

### Wearability/Longevity:

The criteria for this is the ability of the surface to resist wear and not require frequent replacement before ten years of normal use.

### Visibility:

This is the ability of the surface or tread materials to be easily noticed at any level, height, angle or direction to be well recognised. (we prefer yellow)





## Typical Solution

### Paint/Sand Combination:

- Low initial cost but cannot be applied to grating.
- Down time during curing.
- Short term non-slip solution, due to delamination.
- High replacement costs, uniformity not achieved.
- Life span 1 - 12 months, mostly due to delamination.

**DOES NOT ACHIEVE ALL GOALS.**

### G.R.P. (Glass Reinforced Plastics)/F.R.P (Fibre Reinforced Plastics) Abrasive Products:

- Medium initial costs.
- Short term non-slip solution.
- Uniformity achieved,
- medium replacement cost.
- Life span of 2 - 5 years, mostly due to cracking and premature wear.

**DOES NOT ACHIEVE ALL GOALS.**







## Typical Solution

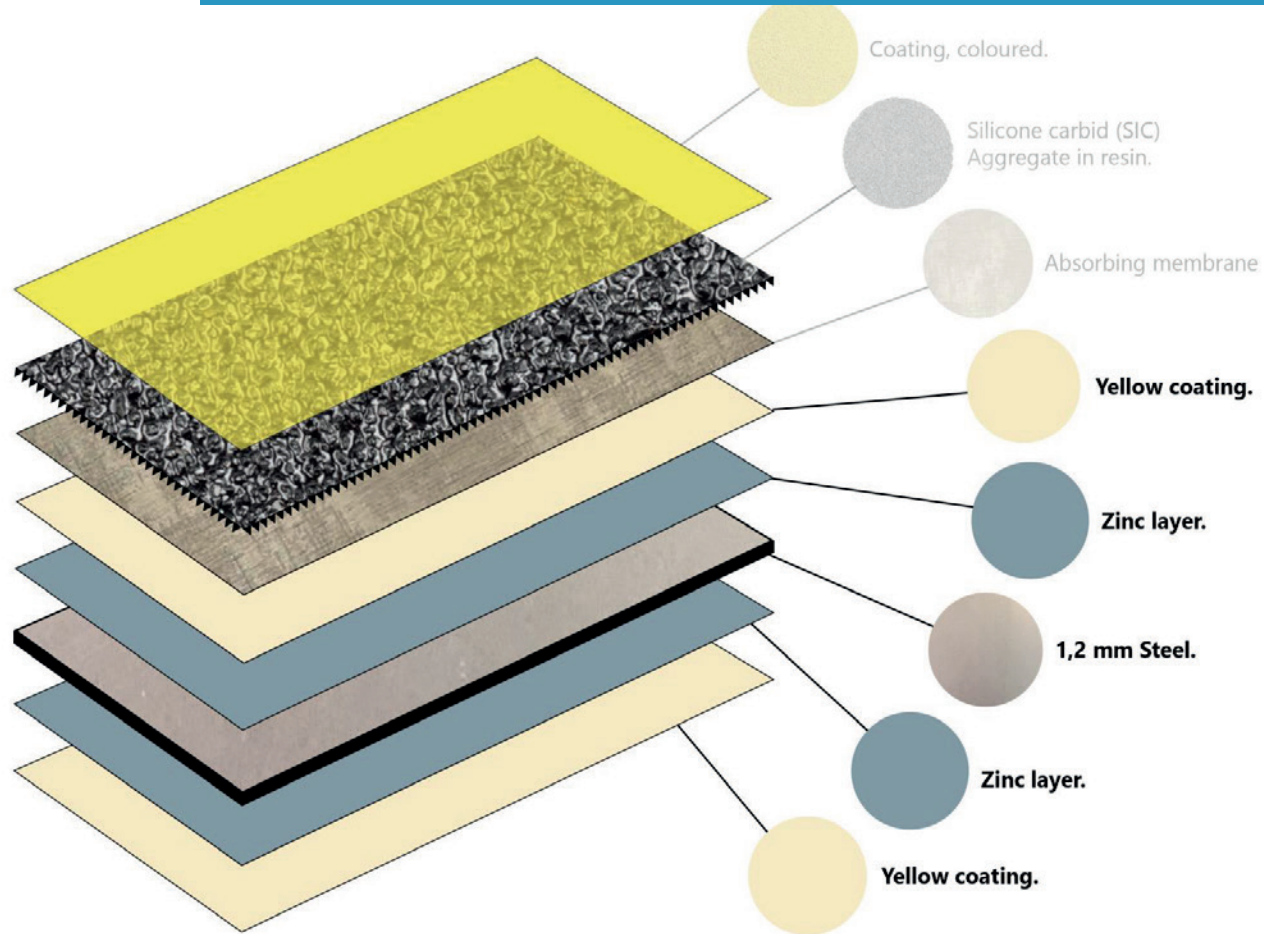
- Quality proven products
- Long term non slip solutions
- Uniformity achieved
- No replacement costs
- Does not delaminate, wear or crack
- Made to size possibilities
- Life span 10 - 25 years



**ACHIEVES ALL GOALS**



## Layers

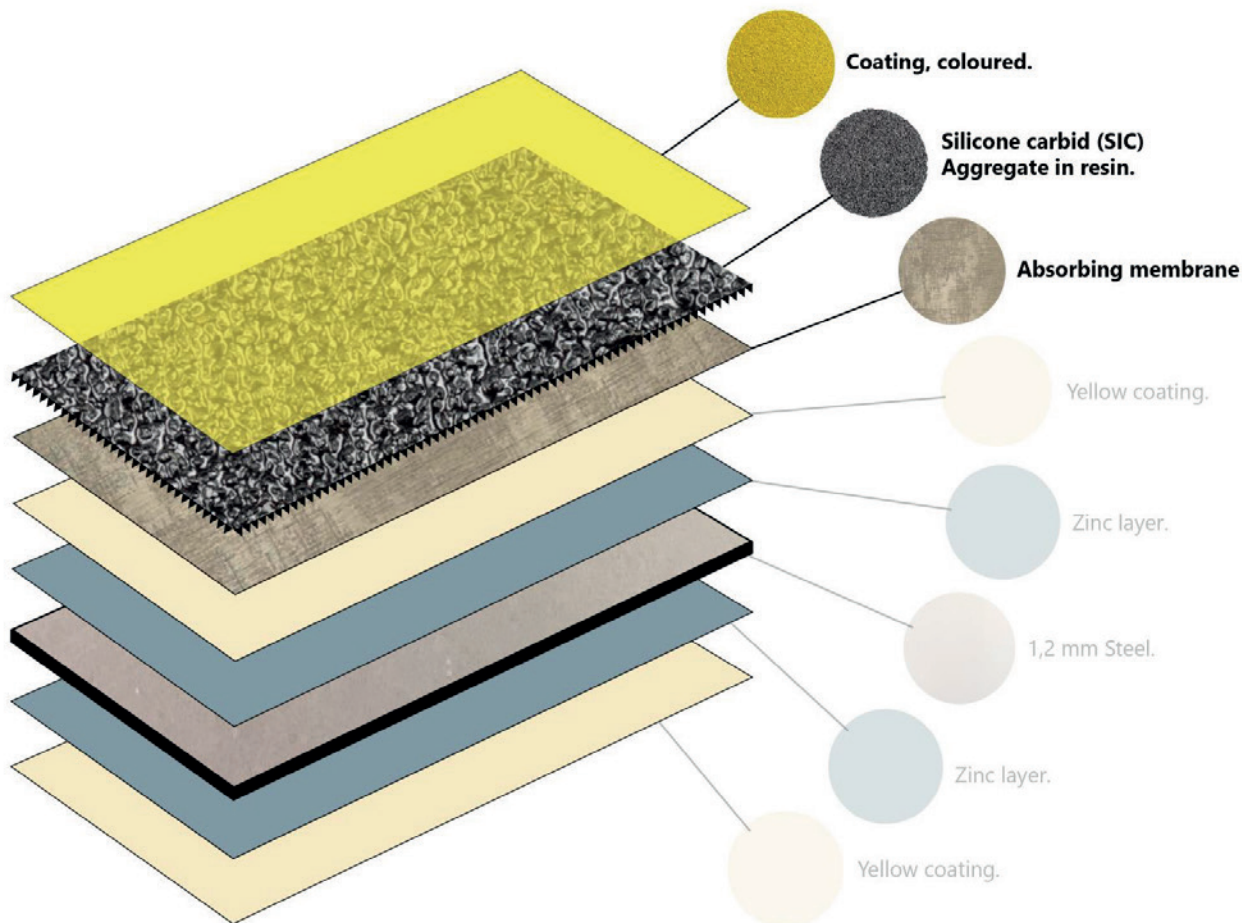


The basis of each Vigil element is a Colorbond or Stainless steel sheet in a thickness of 1.2 mm.

The thin structure significantly reduces the risk of stumbling and, when applied to stairs the risk of heels hooking on the stairnosing.



## Layers



### ABSORBING MEMBRANE

Variations in temperature make every product expand or shrink. Every material has a different expansion coefficient.

The absorbing membrane absorbs the differences in expansion and shrinking of the various layers. The product will not delaminate due to this and withstands temperatures from  $-30^{\circ}$  to  $+60^{\circ}$  C.

### SIC AGREGATE

For the anti-slip properties SiC or silicone carbide is used. It is the hardest and sharpest aggregate available in bulk quantities. Its hardness of  $2,480\text{kg/mm}^2$  far exceeds that of silica, quartz or aluminium oxide.

It is available in several grades.





## Available in 3 Grades



- Offshore grade:  
Application in polluted and dirty areas such as offshore or refineries, etc.  
Can handle lots of dirt before cleaning is necessary.
- Industrial grade:  
Application in medium polluted areas such as the mining or manufacturing industries, etc.  
When polluted cleaning with high pressure syringe.
- Commercial grade:  
Application in slippery less polluted areas such as commercial environments. When polluted cleaning for instance with high pressure syringe.





# Industrial Applications





It can be cleaned with hot water and high-pressure syringe.





# STAIRNOSINGS

SAFETY WITHOUT A COMPROMISE:

- High visibility.
- Does not wear, especially important at the vulnerable front- edge of the stairnosings.
- Available in several grades, to adapt to level of pollution.
- Chemical resistant.







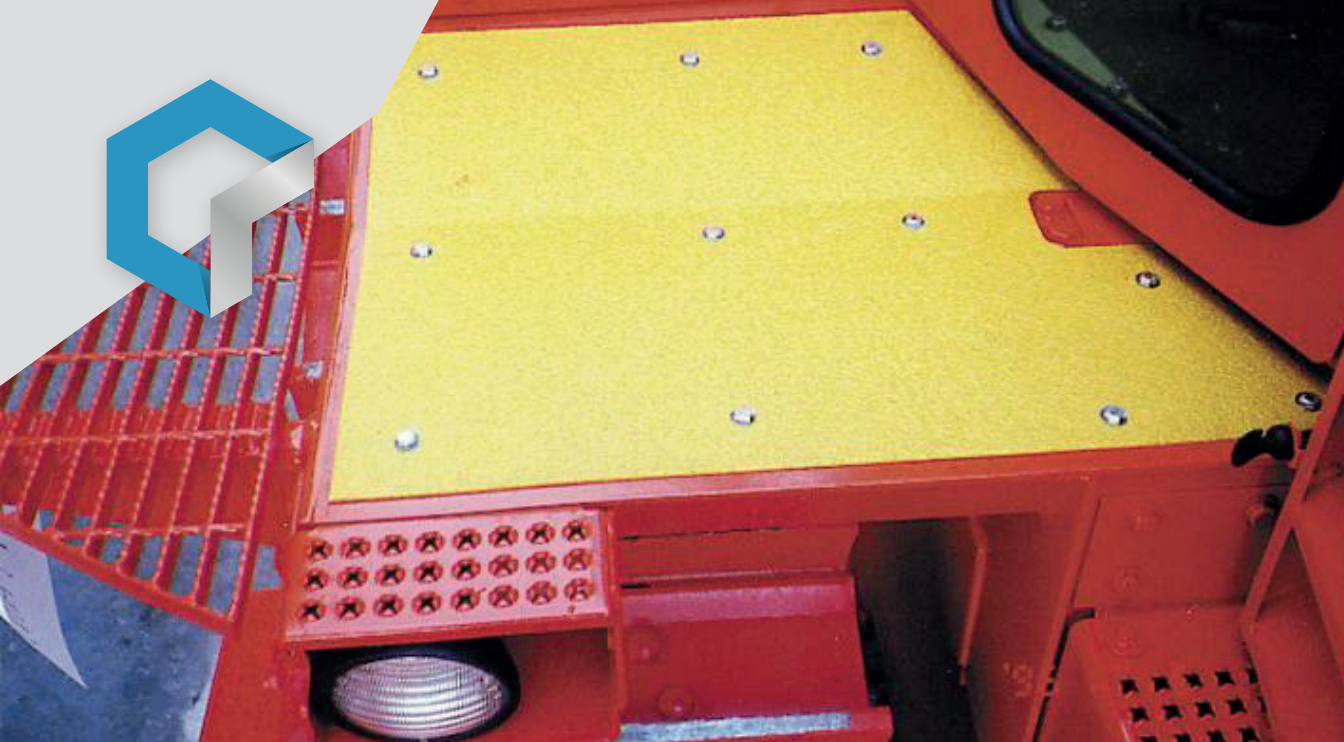
## LADDER RUNG COVERS

- Available in rectangular (U) shape, chevron (V) shape and round shape.
- Available in various diameters.
- Available in range of standard widths.
- Yellow color for good visibility.
- Easy top assemble with either Sikaflex glue or with rivets.

The elements are standard made in Lt. industrial anti-slip grade to guarantee excellent anti-slip properties but in a way that they do not cause harm to hands when climbing.







## METAL DECK

When new checker plates or steel gratings they offer a reasonable level of anti-slip protection, frequent use however polishes the surface and thus creates a dangerous slippery surface.

By equipping gangways, made from the above materials, with Vigil anti-slip elements with intervals of 150 mm a very safe passage can be created as by walking on it either the toe or the heel will touch the Vigil element. Gratings fit with Vigil than still will allow moisture and dust to pass through.







## VINYL DECK

The flexible and easy to apply\* vinyl deck is ideal for application on bended surfaces. When properly applied Vigil Vinyl Deck does not lose its anti-slip properties, will not break, nor delaminate.

The product finds its application in wet-zones, canteens and even in heavy industries.

\* to be glued over the full surface on a properly cleaned foundation.



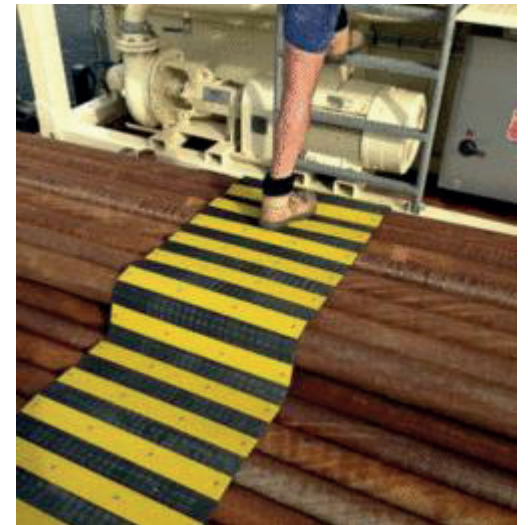




## FLEX DECK

Uneven surfaces can be potential deadly and demand a special anti slip solution. With flex deck an anti slip solution can be created with excellent visibility that adapts itself to almost every basis.

Can be rolled up and removed after use.







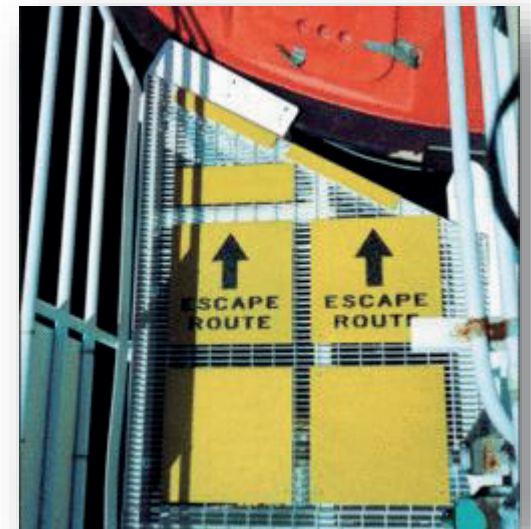
## EVACUATION & MARKING

Vigil Antislip developed a range of products with which workers are pointed in the right direction and help create safe escape routes:

- Deck Mark: Vigil elements with signs like 'Escape Route' made to size.
- Deck Light: Vigil elements with a photoluminescent surface.

These products offer the same characteristics like all other Vigil products:

- superior slip resistance, long lifespan,- high resistance against liquids etc. etc.



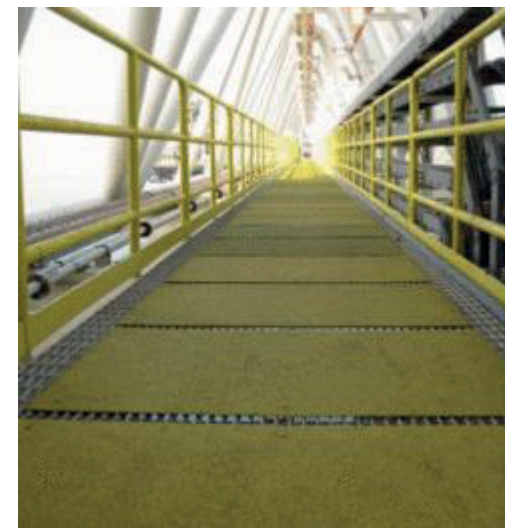




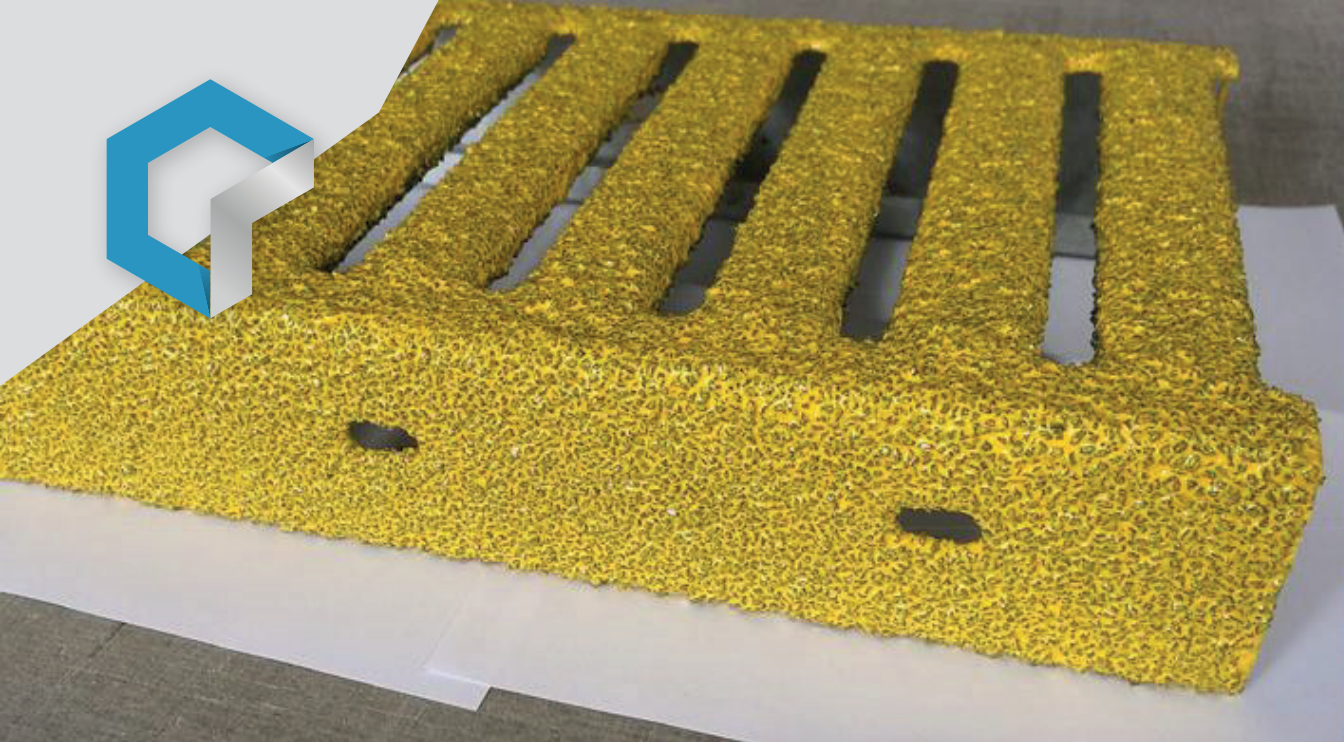
## GANGWAYS & AISLES

All gangways or aisles in areas polluted with liquids, solvents, dust etc. have an increased risk to become slippery and deserve the best possible anti-slip solution. Typical risky situations can be found in numerous industries like:

- Chemical Industries,
- Off Shore operations,
- Food and drink processing industries,
- Mining,
- Shipping and Shipbuilding,
- Breweries,
- Automobile industries and garages,
- Dredging.



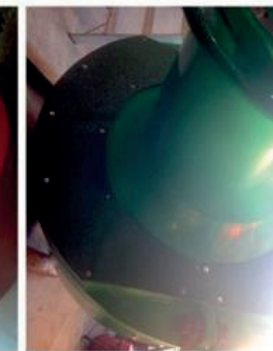
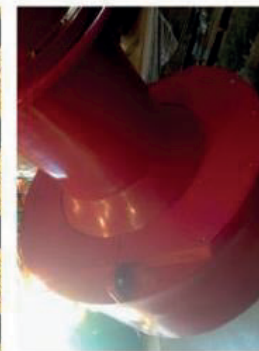




## CUSTOM MADE SOLUTIONS



Perforated Grating



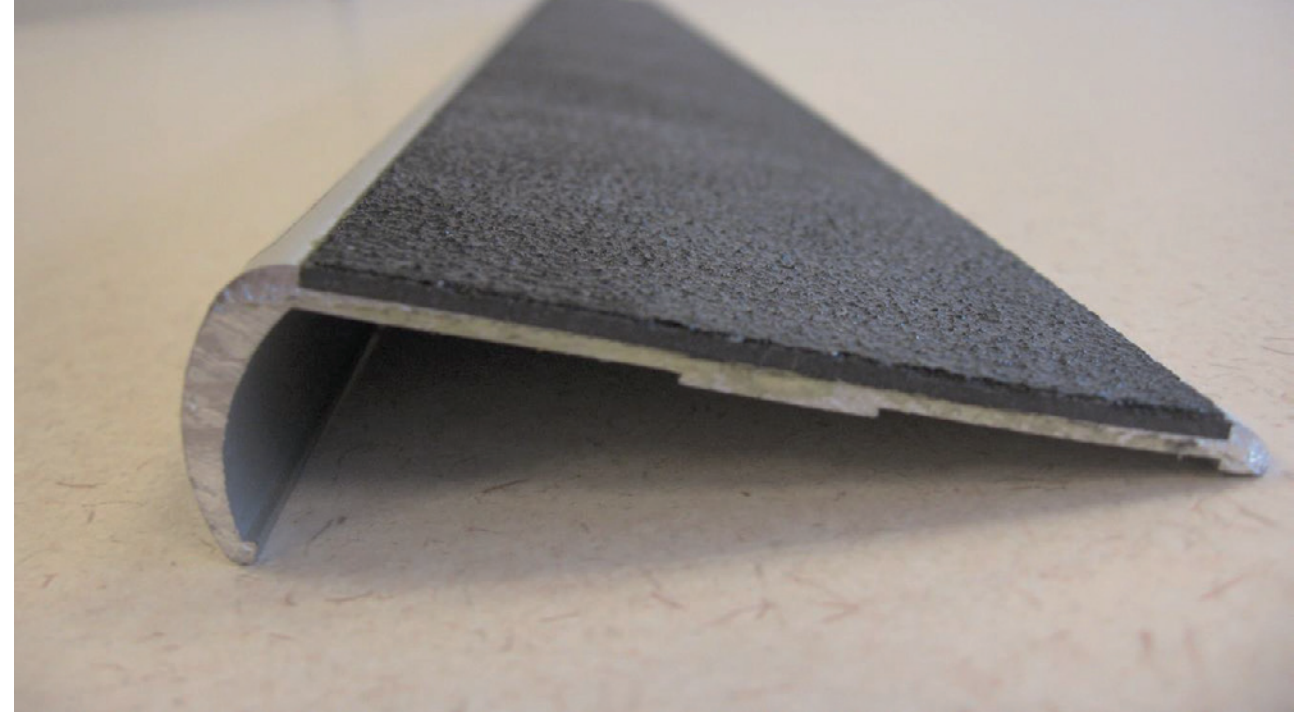
Antislip Rims on Marine Marker Buoys





# Commercial Applications





# ALU-STAIRTREADS

## Safety on stairs

Reduces the risk of a fall to a minimum and is still a good decorative product.

Strong durable and UV-stable.

Ideal for redecorating used stairs that are polished by frequent use or that are damaged.

- Ideal both for inside and outside use.
- Available in a wide range of colors.
- Based on an extruded aluminum profile in silver and anodized brass color.
- Easy to install with special developed Sikaflex glue
- Comes in strips of max 6 meter and is easy to cut to the required length.





## VINYL DECK

Vigil Antislip Vinyl Deck is developed in order to eliminate the risk of injuries. In the mean time it improves the workflow as it is an essential element in the floor covering of wet area in commercial buildings. Typical areas of application are: kitchens, canteens, cloakrooms, etc.

Vinyl Deck is available in a huge range of colors. The product does not discolor, tear\*, or delaminate. The product is easy to install with full-surface-glue on all kinds of surfaces, it adjusts itself to irregularities and curved surfaces. Before fixing it is easy to cut into the required shape. Also available in Luminiscent (glow in the dark) version.

\* If well installed with full-surface-glue.



## Why the Anti-Slip Solution

WARRANTY NO:  
CUSTOMER:  
ORDER NO:  
DATE:

### WARRANTY

Prism Pty Ltd (A.B.N.: 54 009 342 910) warrants all Class One Quality **Vigil Antislip** products purchased on the above Order Number and date, for a period of Ten (10) years from the date of invoice.

It is warranted that all materials and workmanship utilised in the manufacture of Class One Quality **Vigil Antislip** products are of the highest quality and further more that these products will be:

- Resistant to wear under normal use and conditions.
- Resistant to degradation from surface exposure to solvents.
- Resistant to corrosion provided that Colorbond Steel - backed products are not installed in salt / acidic splash zones
- Resistant to delamination through thermal expansion inequities.
- Resistant to delamination through impact except for the immediate impact zone.

If the **Vigil Antislip** products fail to comply with the Warranty, **Prism Pty Ltd** shall replace such products at no cost to the Distributor or Customer within a period of 4 weeks after official notification.

**Prism Pty Ltd** assumes no liability for damage to **Vigil Antislip** products caused by improper treatment or if the product has been subject to abuse or incorrect installation.

Only original Warranty Certificates can be used for claim purposes.

S.R. McCorkill  
Managing Director

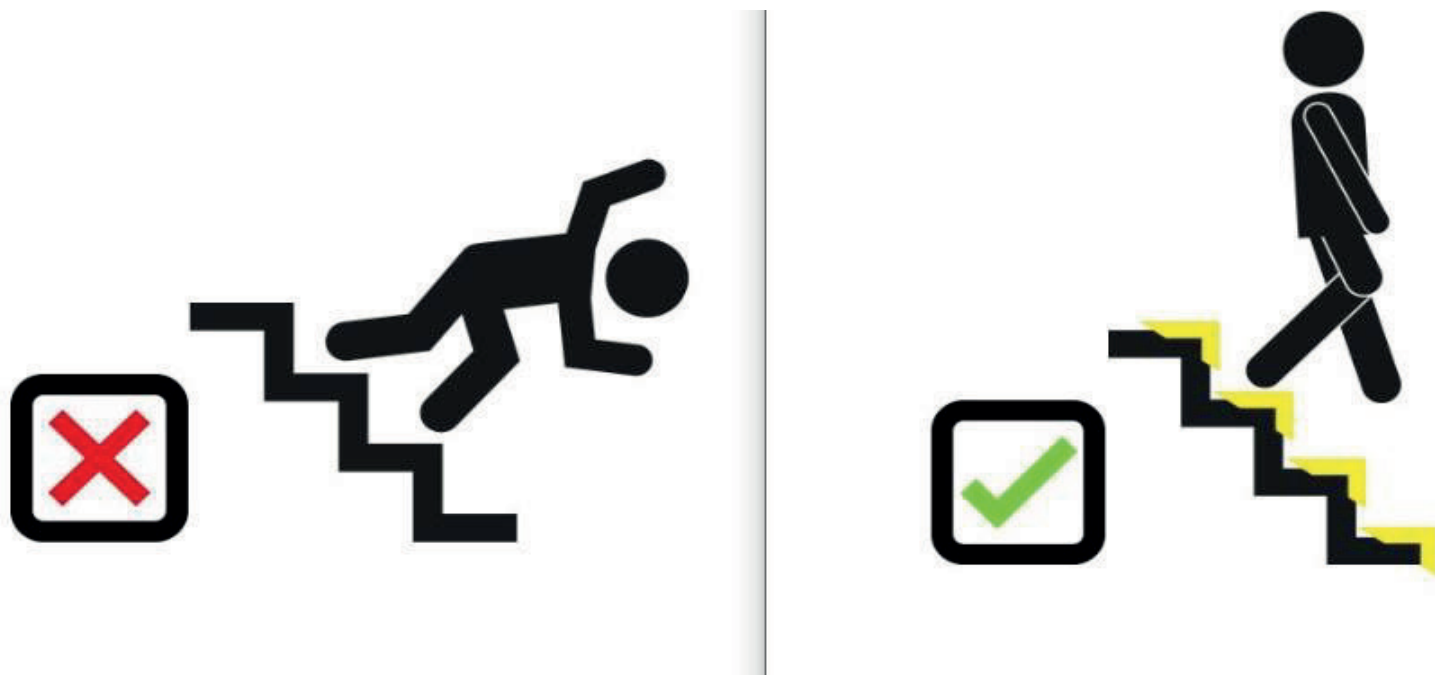
Mark Smith  
Production Manager

- Vigil Anti-slip was founded in 1989 / Haagh Protection in 1981
- Stability of ownership & accessibility
- **10 YEAR REPLACEMENT WARRANTY**
- Quality products & materials used during production process
- Reduced costs due to superior quality and non-replacement of inferior products
- Multiple industries and applications
- Delivery from stock
- Market Leader with commitment to Quality
- Peace of mind



## Why the Anti-Slip Solution

Vigil does not pretend to be the cheapest product on the moment of ordering but consider the total cost of ownership!











## International Brands Food-Industry

Mc Cain Foods  
Bayer Chemicals  
Landrover  
DAF Trucks  
TATA Steel  
Nedschroef  
Lamb Weston  
Griffith Foods  
Friesland Campina  
Bunge Loders Crocklaan  
Puratos NV  
Persoon BV  
CRH Group  
ST Microelectronics  
Galloo NV  
Iemants NV  
Ardagh Group  
Dycore  
Toyota Belgium  
Volvo  
Hamal Signature  
Owens Corning  
Enexis  
BASF  
Caterpillar  
Bosch

Daimler-Benz AG  
Goodyear  
Hewlett Packard  
Vista Print  
Johnsen & Johnsen  
Kelloggs (Pringles)  
Langnese Iglo  
Nestle  
Danone  
Siemens AG  
Thyssen krupp AG  
Volkswagen  
P.T. Krakatau Steel  
Samsung heavy Industries  
Coca Cola Amatil  
Malta Diary  
Foster Clark  
Swan Breweries  
Cargill  
Alcoa  
Mitsubishi  
Coroos Conserven  
Fugro  
ADM Mainz  
Van de Moortele  
La Venezia

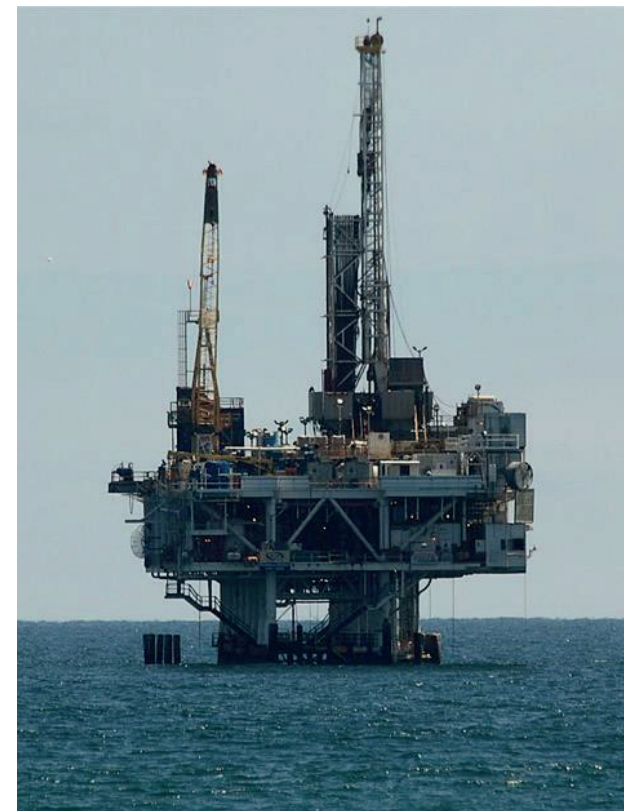




## International Brands Oil Production & Offshore

Dredging International  
Total Indonesia  
Schlumberger Brazil  
Petronas Carigali  
Shell Petroleum Group  
Van Ommeren Terminals  
Rijkswaterstaat (Delta-works)  
Jan de Nul  
BP Exploration  
Jack Up Barge  
All Seas  
Maersk Drilling  
Neptune  
Qatar Gas  
BP Oil  
Chevron  
Exxon Mobile  
TESO  
National Oilwell Varco  
Brunei Shell Petroleum  
DEME  
SS Rotterdam  
Dana Petroleum  
Oiltanking Malta

Caltex  
Kuwait drilling  
Halliburton  
Petro Canada  
Diamond Offshore  
Mobil North Sea  
Sakhalin energy (Russia)  
Sekisui SLEC  
Eurochem Antwerp  
Vopak Terminals  
Engie Services

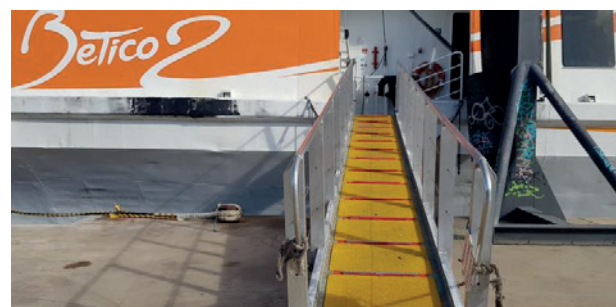




## International Brands Transportation · Public · Other

Volkerrail  
Stadt hannover  
Zoo Duisburg  
Stichting AAP  
Smithsonian Institue  
United Airlines  
City op Perth  
Brisbane Airport  
Bundeswehr  
United States Navy  
Port of Rotterdam  
Melbourne Airport  
TNT Transport Group  
Red Cross Belgium  
City of Amsterdam  
Deutsche Bahn  
Nederlandse Spoorwegen  
London Underground  
Volker Rail  
Kenbri Firefighting  
Tilburg Fire Dept.  
ADM Europoort  
Rubix Group - Brammer  
It'sMe  
Mennens  
NATO

Western Power  
Deutsche Post  
Port of Singapore  
Rod Laver Arena  
Thales Australia  
Port of Antwerp  
Datwhyler  
Kuehne & Nagel





Comprehensive

# advance safety service

FOR INDUSTRIAL  
WORKFLOWS

---

## Contact

---

+34 620 526 473

[info@safeway360.com](mailto:info@safeway360.com)

Carrer Aumet, 66

17460 Celrà, Girona



**Safeway360**

SAFETY  
ENGINEERING  
FOR A SAFE  
WORK

360



ibnic.