

SAFETY  
SOLUTIONS  
FOR A SAFE  
WORK



**Safeway**360

**360.**

Safegate

Safety  
lock doors

## Standard solutions

The main characteristic of the Safegate series is its compact construction. They require a minimum amount of space so no valuable storage and/or working space is lost. The connection between the separate components

is ingenious, making them easy to operate. The device is shock-resistant and is very durable, even in heavy use. The Safegate series are available on order and competitively priced. Safeway360 can supply every type of gate.

### Safegate 18-Series

The **Safegate** 18-Series is a swing arm pivoting loading gate. Three rectangular frames swing over the sides of the goods.

#### Suitable for loads as follows:

Height:	1.800 mm
Choice of Widths:	1.200, 1.600, 2.000 and 2.600 mm*
Depth:	1.400 mm

#### Installation space dimensions:

Height:	2.075 mm
Width:	1.600, 2.000, 2.400 and 3.000 mm
Depth:	Fixed supports: 800 mm Pivoting component: 1.580 mm
Turning radius:	2.025 mm (measured from the floor edge)

\* Widths take the required space for manoeuvring on both sides into account.



### Safegate 22-Series

The **Safegate** 22-Series is a swing arm pivoting loading gate. Three rectangular frames swing over the sides of the

#### Suitable for loads as follows:

Height:	2.200 mm
Choice of Widths:	1.200, 1.600, 2.000 and 2.600 mm*
Depth:	1.450 mm

#### Installation space dimensions:

Height:	2.510 mm
Width:	1.600, 2.000, 2.400 and 3.000 mm
Depth:	Fixed supports: 830 mm Pivoting component: 1.617 mm
Turning radius:	2.203 mm (measured from the floor edge)

\* Widths take the required space for manoeuvring on both sides into account.



Safegate includes assembly, if desired. The tubular frame sections are supplied in powder coat (Yellow). Other colours are available on request.

The tubular frame sections meet the dutch national safety regulations. Safeway360 offers a two-year warranty on every product. Technical drawings are available on request.

### Safegate 26-Series

The **Safegate** 26-series is a swing arm pivoting loading gate. Three rectangular frames swing over the sides of the goods.

#### Suitable for loads as follows:

Height:	2.600 mm
Choice of Widths:	1.200, 1.600, 2.000 and 2.600 mm*
Depth:	1.500 mm

#### Installation space dimensions:

Height:	2.900 mm
Width:	1.600, 2.000, 2.400 and 3.000 mm
Depth:	Fixed supports: 900 mm Pivoting component: 1.785 mm
Turning radius:	2.470 mm (measured from the floor edge)

\* Widths take the required space for manoeuvring on both sides into account.



### Safegate 26ED-Serie

The **Safegate** 26-series is a swing arm pivoting loading gate. Three rectangular frames swing over the sides of the goods.

Characteristic for deep loads of 2.800 mm

#### Suitable for loads as follows:

Height:	2.600 mm
Choice of Widths:	1.200, 1.600, 2.000 and 2.600 mm*
Depth:	2.800 mm

#### Installation space dimensions:

Height:	3.036 mm
Width:	1.600, 2.000, 2.400 and 3.000 mm
Depth:	Fixed supports: 1.530 mm Pivoting component: 2.940 mm
Turning radius:	3.460 mm (measured from the floor edge)

\* Widths take the required space for manoeuvring on both sides into account.



## Special Note

Safegate do not fall under any EN standard. Safeway360 products are supplied in accordance with the laws and regulations on gate systems. Under normal use the equipment does not cause any injury to bystanders

/or users. After delivery and installation Safeway360 offers a two-year guarantee over the whole supply programme. This is only applicable in cases of normal use and it does apply for components that have been subject to undue wear.

### Safegate 30-Series: Guillotine-device

The guillotine model can be used where there is limited space behind the loading area. This problem occurs when there is insufficient space for the outswing or a lateral displacement of the load.

#### Suitable for loads as follows:

Height:	2.100 mm
Choice of widths:	1.200, 1.600, 2.000 and 2.600 mm*
Depth:	1.400 mm

#### Installation space dimensions:

Height:	3.275 mm
Width:	1.600, 2.000, 2.400 and 3.000 mm
Depth:	Fixed supports: 350 mm Sliding component: 1.600 mm

\* Widths take the required space for manoeuvring on both sides into account.



### Safegate 30HI-Series: Guillotine-device

The sliding/folding model is a variant of the Safegate 30 guillotine device and is ideal for use in areas where, besides the overall height, the available depth behind loading opening is limited.

#### Suitable for loads as follows:

Height:	1.600 mm
Choice of widths:	1.200, 1.600 and 2.000 mm*
Depth:	1.200 mm

#### Installation space dimensions:

Height:	2.650 mm
Width:	1.600, 2.000 and 2.400 mm
Depth:	Fixed supports: 495 mm convertible component: 1.700 mm

\* Widths take the required space for manoeuvring on both sides into account.



## Safegate Barrier type

For more complex situations with limited room to manoeuvre or where rolling bridges are used, the barrier concept developed by Safeway360 is the perfect solution. This barrier is also a safe solution in environments with hinged doors.

A specific transfer system between both mechanical barriers directly controls the construction: when one barrier is opened, the other is immediately closed automatically. There are two available versions for this solution.

### Safegate 90-Serie: Barrier-Type

A barrier device where the goods are supplied or removed directly behind the plug-in opening to the left or right-hand side. The upper barriers are equipped with a retraction mechanism that also supports the operation, making the device easy to operate. The retractable upper barriers keep the required installation height to a minimum.

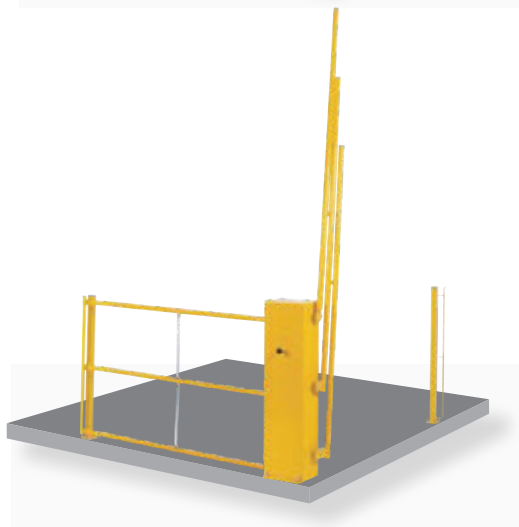
#### Suitable for loads as follows:

Height:	Unlimited
Widths	On request
Depth:	On request

#### Installation space dimensions:

Height:	Device width + 510 mm
Widths	On request
Depth:	On request

\* Widths take the required space for manoeuvring on both sides into account.



### Safegate 180-Serie: Barrier-Type

Barrier device for use in situations in which the goods are transported directly to or from the rear. The upper barriers (front and rear) are equipped with a retraction mechanism that also supports operation, making the device light to operate. These retractable upper barriers keep the required installation height to a minimum.

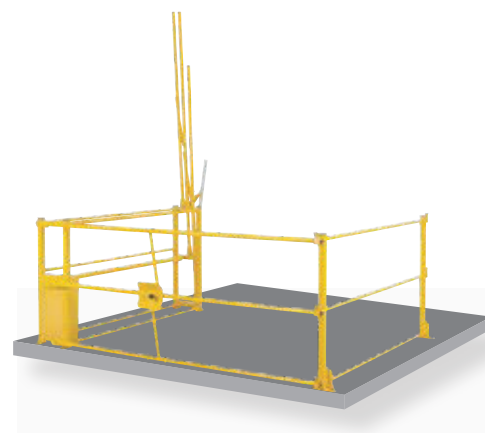
#### Suitable for loads as follows:

Height:	Unlimited
Choice of widths:	1.000 up to 2.400 mm
Depth:	1.300 mm

#### Installation space dimensions:

Height:	Device width + 430 mm
Widths:	1.600 up to 3.000 mm
Depth:	1.600 mm

\* Widths take the required space for manoeuvring on both sides into account.



## Quality guarantee

The quality is substantiated and guaranteed by a TUV certificate issued following extensive strength calculations and physical tests that have been assigned to the Safegate.

### Safegate 10-Series

The **Safegate** 10-Series is a pivoting loading gate design. The movable part of the gate lifts partly over the goods.

#### Suitable for loads as follows:

Height:	1.600 mm
Choice of Widths:	1.200, 1.600, 2.000 and 2.600 mm*
Depth:	1.400 mm

#### Installation space dimensions:

Height:	2.150 mm
Width:	1.600, 2.000, 2.400 and 3.000 mm
Depth:	Fixed supports: 900 mm Pivoting component: 1.900 mm
Turning radius:	2.250 mm (measured from the floor edge)

\* Widths take the required space for manoeuvring on both sides into account.



### Safegate 360-Series

The **Safegate** 360 models offer a solution in situations where the space behind the loading opening area is limited, unloading is done with a hoist and/or a lot of height is required for loading. **Safegate** rotating models are suitable for areas where there are no height restrictions and for loads weighing up to approx. 2.000 kg. (Delivery includes a metal loading ramp.)

#### Suitable for loads as follows:

Height:	Unlimited
Width:	1.300 mm*
Depth:	1.400 mm

#### Installation space dimensions:

Height:	1.150 mm
Width:	2.351 mm
Depth:	1.700 mm
Turning circle:	2.121 mm

\* Widths take the required space for manoeuvring on both sides into account.



## Accessories

In addition to the large portfolio of safety pallet gate systems, Safeway360 also offers various accessories. These products are at a further increase of the safety of various high

leveled individual situations; like shielding entrances, marking lifting points and more. The possibilities are endless!

### Aluminum chequer plate

For situations in which a chequer plate is preferred to protect the floor, **Safeway360** delivers chequer plates with a 5 or 2 bar pattern in our **Safegate** cantilever gates. Our chequer plates are also from stock available in various standard sizes. Chequer plates are applied for various purposes. For instance to protect landing edges or underlying foundations and materials, but also to demarcate pallet stacking frames.



### Safety netting

From now on we can also supply safety nets from stock. Available in lengths of 1.40 – 1.80 – 2.20 and 2.80 metres wide, suitable for the standard **Safegate** systems. Safety nets protect smaller sized goods from damage caused by a fall from a higher level. They also prevent injury to pedestrians walking at the lower level. Made to size nets are also available upon request.

### Marking tape

To add additional marking to your pallet stacking frame, **Safeway360** delivers various tapes. These tapes are easily made to fit the right dimensions and properly mark the pallet stacking frame. Marking is easy and can be done in various ways, for instance on the entresol or on the front of entresol's edge. This product offers maximum flexibility!



### Safegate additional fencing

If a situation requires additional fencing to fill in the opening, **Safeway360** has perfect solutions available. This fencing is easily made to fit and can be assembled just as easy. Furthermore, this fencing is equipped with a toe board, while its design enables different configurations.

# Safegate





## Customized solutions

For situations where the specifications of the Safegate series do not meet your requirements, Safeway360 can provide you with a customized solution. This could be the case when, for example, there is

a (fire)door, low headroom or an overhead crane. We can offer you a range of solutions for these situations. All of our products are made in a standard RAL1028, yellow colour but there is a choice in other colours as well.

### Made to size solutions

If your situation deviates too much from the solutions in our standard **Safegate** range, we can offer you a custom-made solution. This concerns, for example, situations with limited head height, limited depth or loading points where a (fire-proof) door is placed in the opening. If you fill in the enquiry form at the back of this brochure and return it to us, we can analyse your situation and prepare a customer-specific quotation for you, if necessary.



### Stainless steel and galvanized

Basically, all **Safegate** apparatus can also be produced as a special in a stainless steel version. Particularly for the food and pharmaceutical industries this is often mandatory.

In addition to that, we offer the possibility to produce a **Safegate** in a galvanized version.

### Deviating colours

A standard **Safegate** is provided with a high quality powder coating in RAL1028 (yellow). In addition, it is possible to produce the devices as a special in a different RAL colour according to (your) customers' specifications.

For prices, possibilities and delivery times please contact our sales team.



# Safegate

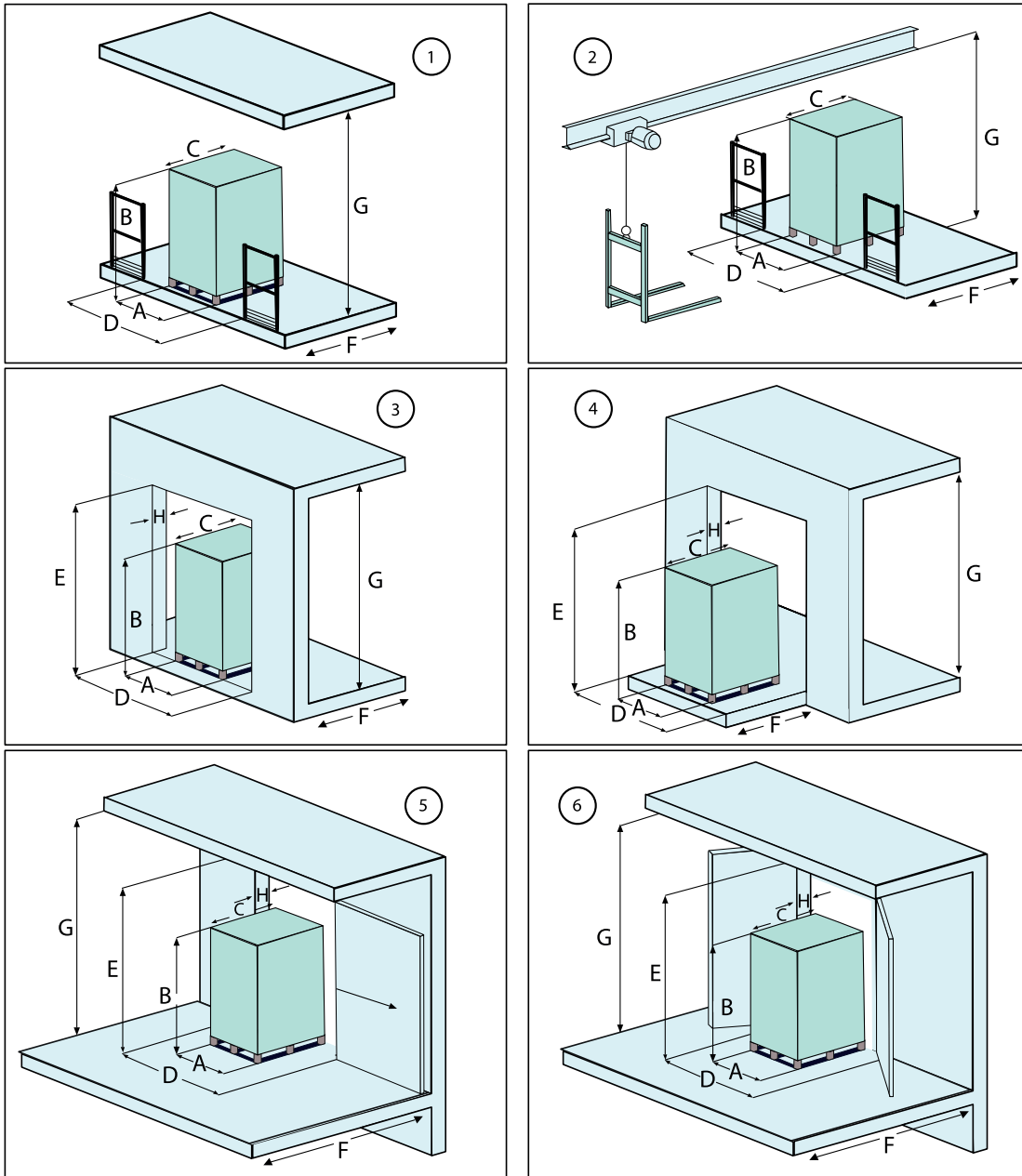


## Dimension detail forms

It is essential that the dimensions for a proper installation and good operating of the Safegate are correct. That is why Safeway360 welcomes the opportunity to assess the situation on site.

Getting the correct information to ensure the quality of the solution!

# Enquiry Form



**Please, mark the current situation**

Situation 1       2       3       4       5       6

A. Maximum width of the pallet = .....MM

B. Maximum height of the pallet = .....MM

C. Maximum depth of the pallet = .....MM

D. Available opening (width) = .....MM

E. Height of opening = .....MM

F. Available depth = .....MM

G. Available height behind the opening = .....MM

H. Distance from front side to the back of the door = .....MM

Type of surface: .....

To which side the goods are to be transported:  
To the back / sideways .....

## References

During the past 35 years, we have been working on improving and making the workplace safer. Over the years we have worked for many large and small businesses in all parts of Europe.

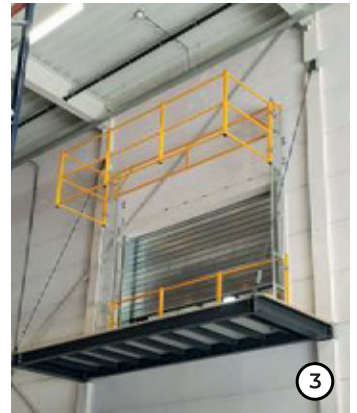
Below you will find several photos of projects in which Safegates have been installed through the years.



1



2



3



4



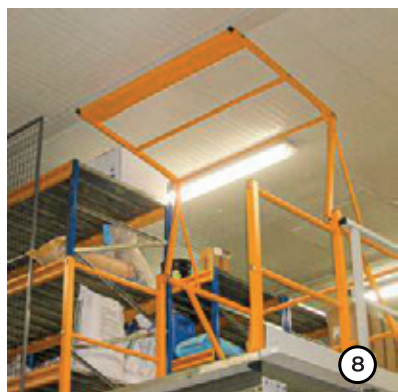
5



6



7



8



9



10



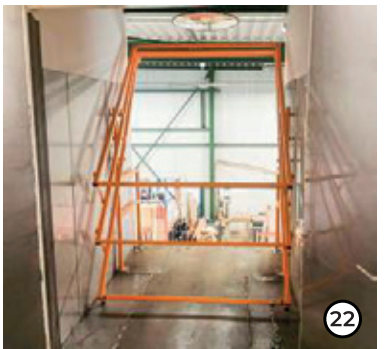
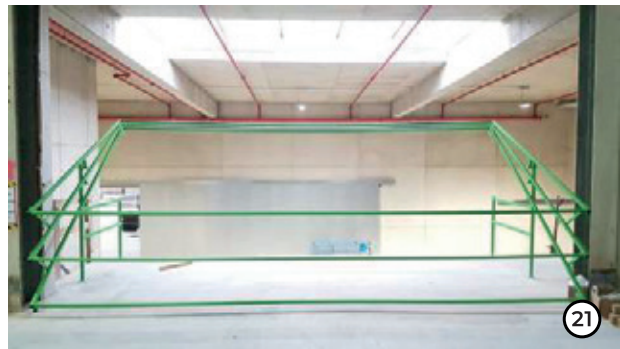
11



12



13



360° service

# SAFETY SOLUTIONS FOR A SAFE WORK

---

## Contact

---

+34 620 526 473

info@safeway360.com

Carrer Aumet, 66

17460 Celrà, Girona

**safeway360.com**

ibnic.



# 360



**Safeway360**